

# Central CT Health District

*Serving the towns of Berlin, Newington, Rocky Hill & Wethersfield*

**Mass Dispensing Area #28**

**Emergency Preparedness Newsletter**

**SUMMER 2010**



Presenting the  
“Golden  
Syringe”  
Awards to Pat  
& Lou



Paul Hutcheon, Patricia Rinaldi, Louis Winkler

The Central Connecticut Health District held a reception on April 20<sup>th</sup> to thank the many volunteers who help make the Health District’s public health program successful. Volunteers assist in household hazardous waste collections, emergency preparedness drills, prescription counseling, skin cancer screenings, glucose screenings, and food safety programs.

The largest group of volunteers, however, works at the annual vaccination clinics for influenza and pneumonia. This past flu immunization season, flu vaccinations had to be administered for both seasonal and H1N1 influenza. A total of 3211 seasonal flu shots, 6335 H1N1 vaccinations and 130 pneumonia shots were given at 32 public clinics in Berlin, Newington, Rocky Hill, and Wethersfield. This was accomplished by a staff of 12 and a volunteer force of 77 people. Two of the volunteers participated in nearly every one of the seasonal and H1N1 clinics. In recognition of their outstanding service, Patricia Rinaldi and Louis Winkler received “Golden Syringe” awards at the reception. Both have been long-time volunteers with the Health District.

In addition to the individual volunteers, both medical and non-medical, the Wethersfield-Rocky Hill Professional Nurses’ Association has been instrumental for 37 years in the effort to immunize people residing or working within the Health District. In appreciation for the nurses’ continued assistance, Director of Health Paul Hutcheon presented Patricia Rinaldi, President of the Nurses’ Association, with a \$500 check for their scholarship program that benefits Connecticut students pursuing a career in nursing.

The Central Connecticut Health District is able to offer a number of public health services and programs to its residents free or at low cost in large part because of the generosity and talents of our volunteers. To learn more about the Health District, its programs and volunteer opportunities, call 860-721-2822 or visit the web site at [www.ccthd.org](http://www.ccthd.org).

## **H1N1 LIVE PODs a Success!**



In April, 2009, CCHD began to work with the four town school districts regarding the management of individuals and families identified as having tested positive for the H1N1 virus or having been exposed. Wethersfield was one of the towns that experienced early suspected cases. Planning was done with the school officials and school nurse supervisors to develop a protocol for daily monitoring and reporting Influenza Like Symptoms (ILI) to the Health District.

Sarah Crescimanni was hired to coordinate the Points of Dispensing (PODs) clinics. Since Sarah volunteered at Seasonal Flu clinics, she was able to jump right in to arrange clinic sites, supplies and staffing. She worked with CCHD staff to field hot line calls, screen and pre-register several thousand based on their priority group and vaccine type needed. All information was entered into a data base.

Visits were made to all seventy-eight (78) physician practices in the CCHD towns of Berlin, Newington, Rocky Hill and Wethersfield to encourage participation in vaccine dispensing.

Daily communication occurred among Health District and CT Department of Public Health staff.

A new voice reach system allowed the Health District to send telephone notification to registrants regarding what clinic to attend – who, date, time, & place. Registrants were sorted by priority groups to match vaccine. 14,000 letters were sent to the parents of all school children.

A newsletter was sent to volunteers describing the H1N1 situation and the need for assistance with staffing the clinics. The District chose to offer contracts for nurse vaccinators and clinic assistants. Approximately 60% of the clinic workers were contracted for their services, the other 40% volunteered. Just in Time Training (JITT) information was developed re: H1N1; types of vaccine; vaccine administration (injectable & nasal); infection control; and safety and security. Four (4) RNs were sent to a CT.TRAIN pediatric vaccination training program.

**TOTAL NUMBER OF CLINICS:** 22 large scale open clinics (100 hours) through the end of January. Smaller clinics continued at the CCHD office throughout February, March and April. Sites were selected based upon number of anticipated vaccinees, location, suitability & availability.

### **CLINICS:**

- Range: 1 to 5 hours with average of 3 hours (A 5 hour clinic was held on a Saturday)
- Average time from entry to exit: 10 minutes
- Average number of vaccinations per hour: 79 (pre-registered no-shows reduced throughput)
- Maximum number vaccinations per hour: 260 (Included injectable & nasal)
- Most clinics processed 250-400

**AGE GROUPS:** ranged from 6 months to 96 years:

6-23 mos 113; 2-4 yrs 529; 5-18 yrs 2,168; 19-49 yrs 1,190; 50-64 yrs 886; 65 yrs or older 1,449

**TOTAL NUMBER OF VACCINATIONS:** 6,335 - includes both 1<sup>st</sup> & 2<sup>nd</sup> doses

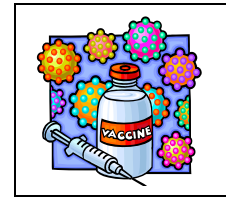
**MOBILE TEAM:** 4 members (3 nurses & 1 non-medical) provided vaccinations at three sites including 2 residential group homes and 1 business. 15 home visits by one nurse volunteer.

**TOTAL NUMBER OF STAFF/CONTRACTED WORKERS/VOLUNTEERS:** 62

- |               |    |              |    |
|---------------|----|--------------|----|
| • Medical     | 29 | • Nurses     | 27 |
| • Non-Medical | 21 | • Physician  | 1  |
| • CCHD Staff  | 12 | • Pharmacist | 1  |



# PLEASE VOLUNTEER



## FOR THE FALL 2010 SEASONAL FLU CLINICS

[Dates to be available in September]

### MEDICAL

Nurses  
Doctors  
Pharmacists  
Pharmacy Technicians  
EMS  
Other medical

### NON-MEDICAL

Greeter  
Forms Assistant  
Vaccinator Assistant  
Runner  
Supply Management  
Interior Security/Traffic Flow  
Volunteer Management



**Contact: Judy Torpey, Emergency Preparedness Coordinator**



**721-2816**

**Leave a message if not in**

**or**



**[judy.torpey@wethersfieldct.com](mailto:judy.torpey@wethersfieldct.com)**

Our website [www.ccthd.org](http://www.ccthd.org) also has information about H1N1, volunteering, emergency preparedness, health, services and other helpful links.

**CURRENT VOLUNTEERS:** Please call Judy if you have had major changes to your personal, professional and/or contact information.



We are using a new automated telephone notification system. If you get a call, you may get a message that will not require any action on your part or you may be given instructions for your response. The message will start as soon as you say "Hello".

# JUST IN TIME TRAINING: Personal Protective Equipment



***Always Use Designated PPE as Directed by Trainer***

**Put on PPE in this order:**

1. Mask or Respirator
2. Gown
3. Goggles/Face Shield
4. Gloves

**Remove in REVERSE order:**

1. Gloves
2. Goggles/Face Shield
3. Gown
4. Mask or Respirator

**REPLACE IF TORN OR  
HEAVILY CONTAMINATED**

***Always discard in designated container in work station/area.***

***Perform hand hygiene before entering/leaving work station/area or as needed.***



## **Mask or respirator**

- Fit flexible band to nose bridge
- Secure ties & elastic bands at middle of head & at neck
- Fit to face & below chin
- Fit-check respirator & adjust as needed to ensure snug fit
- Avoid contact with contaminated front part of mask/respirator
- To remove, start at back of head, grasp bottom tie/elastic band, then top tie/elastic band



## **Gown**

- Should fully cover torso neck to knees, arms to end of wrist, and wrap around the back
- Fasten in back at neck and waist
- To remove, unfasten neck & then waist ties
- Grasp edges of gown near neck ties & loosen gown from body
- Grasp inside of one sleeve over hand
- Grasp opposite sleeve cuff, pull gown off arms & body-avoid touching outside
- Roll into a bundle inside out & discard



## **Goggles and/or face shield**

- Adjust to fit comfortably over mask or respirator
- Handle by “clean” head or ear pieces when removing



## **Gloves**

- Use non-sterile gloves
- Select gloves for hand size
- Extend glove to cover wrist or wrist of isolation gown
- To remove, grasp glove cuff with opposite gloved hand & peel off inside out
- Hold removed glove in gloved hand
- Slide fingers of ungloved hand under remaining glove at wrist & peel off